

~ 2017 NJASECD CONFERENCE AT-A-GLANCE ~

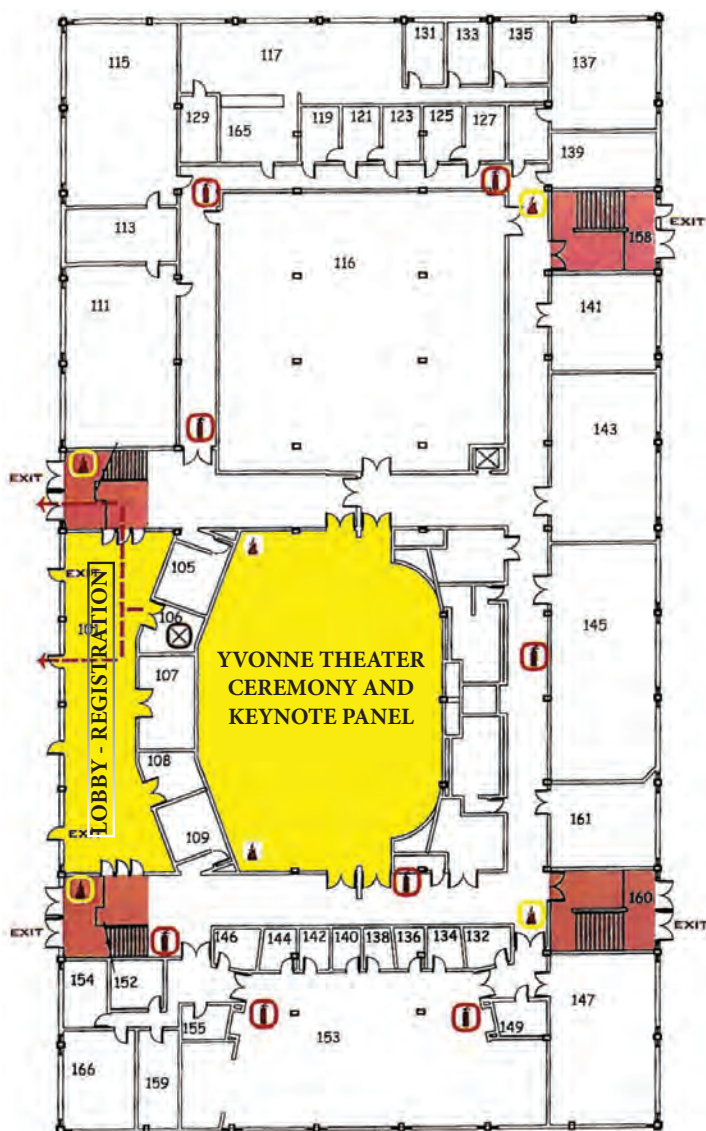
- 7:30-8:15 REGISTRATION AND REFRESHMENTS – Fine Arts Building, Yvonne Theater Lobby
- 8:15-9:30 RECOGNITION PROGRAM – 2017 NEW JERSEY SCHOOLS OF CHARACTER – Yvonne Theater
- 9:45-10:00 WELCOME, INTRODUCTIONS, AND BUSINESS MEETING – Yvonne Theater
- 10:00-11:00 KEYNOTE PANEL – CHARACTER FOR ALL STUDENTS – Yvonne Theater
- 11:15-12:00 BREAKOUT SESSION 1 – Fine Arts Classrooms – See below
- 12:00 -12:45 LUNCH at the Bart Ludeke Student Center
- 1:00-1:45 BREAKOUT SESSION 2 – Fine Arts Classrooms – See below
- 2:00-2:45 BREAKOUT SESSION 3 – Fine Arts Classrooms – See below



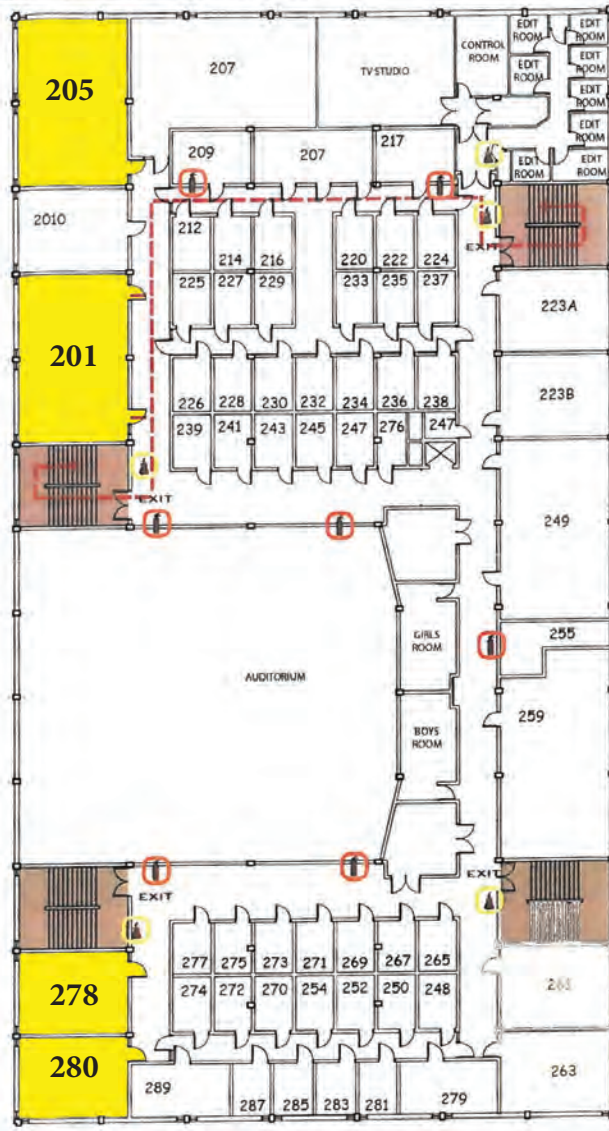
BREAKOUT SESSION SCHEDULE: FINE ARTS CLASSROOMS (Second and Third Floor)

	<i>Breakout Session 1: 11:15-12:00</i>	<i>Breakout Session 2: 1:00-1:45</i>	<i>Breakout Session 3: 2:00-2:45</i>
ROOM 201	Keynote Panel Follow-Up: Sustainability and Growth As a School of Character (ES) Laurie Ann Coletti, Principal McDivitt Elementary School, Old Bridge, NJ	Keynote Panel Follow-Up Session: ...And the Beat Goes On! (MS) Mary Reinhold, Retired Principal and Marc Citro, Principal Macopin Middle School, West Milford, NJ	Keynote Panel Follow-Up: Character Education – A Principal’s Perspective (HS) Christopher Kelly, Principal Whippany Park High School, East Hanover, NJ
ROOM 205	From Beginning to End and More (ES) Dr. Cathy Lundquist and Trudy Coppola, Teachers, and Heather Praml, Guidance Counselor Cedar Hill Elementary School, Montville Twp. NJ	School Safety Teams: The Law and School Climate (ALL) Sandra L. Jacques, Esq., Supervisor of Legal Research & Content Development LEGAL-ONE, NJPSA/FEA	NJ DOE Update (ALL) Luiz Periera and Kirsten Weigert New Jersey State Department of Education
ROOM 278	Celebrate Character (MS) Laurianne Brunetti Kuipers, Character Education Coordinator Memorial Middle School, Fair Lawn, NJ	#BeAPal (ES) Kerry Quinn, Principal, and Laura Gorcica, Guidance Counselor Frank J. Smith Elementary School, East Hanover, NJ	Ritualizing SEL Through Creative Expression (ALL) Michael Cruz, School Operations Manager and Caitlin Daly, Education Wellbeing Consultant Speedway Academies, Newark and “Move This World”
ROOM 280	A Data-driven Approach to Sustainable School Climate Improvement (ALL) Dr. Lori Guerriero and Alicia Raia-Hawrylak, Managers, Center for Applied Psychology, Rutgers University	Energizing the Growth Mindset: Developing 21st Century Skills (ES) Linda Patterson, Teacher, and Paula Pennington, Literacy Coach A. Russell Knight Elementary School, Cherry Hill, NJ	Project Mindful (ES) Lisa Bowe, School Counselor, and Carlos Gramata, Principal Hillside Elementary School, Livingston, NJ
ROOM 301	Getting Students Involved and Having Them Lead the Way (ES) Jennifer Miller, Principal, and Shannon Ricker, Teacher/Advisor Paradise Knoll Elementary School, West Milford, NJ	Little House Lessons: 80 Years and Going Strong (ES) Dr. Ann T. DeRosa, Principal, Debbie DeBaro, Guidance Counselor, Anthony Tumulo, Teacher, and Alissa Sider, Teacher Whitehouse School, Whitehouse Station, NJ	Improving School Climate through School-wide Character Activities Melissa DeClementi, Beth Green, and Kim Klein, Teachers Cinnaminson Middle School, Cinnaminson, NJ
ROOM 303	How To Ensure A Sustainable Systematic Approach To Social-Emotional Learning (ALL) Elizabeth Warner and Dr. Patricia Heindel, Co-Directors School Culture and Climate Initiative	Keeping it “REAL”! (ES/MS) Patricia Carr, C.O.R.R.E.C.T. Coordinator Oxford Central School, Oxford, NJ	Be Today’s Hero - Using District-wide Themes to Enhance Your Character Education Program Jeannie Drexinger and Erika Inzano, Salt Brook ES New Providence School District, New Providence, NJ
ROOM 307	Toms River High School East Character Club (HS) Dennis Weidenbush, Adviser, Drew Uguro and Mike Bonafide, Student Leaders Toms River High School East, Toms River, NJ	Character Education – Working on Building Citizens of Tomorrow Mona Noyes, Erin Plummer, Kareem Agostini, and Barbara Wilson Cherry Hill Public Schools, Cherry Hill, NJ	Bottom Up, Top Down, Middle Out: Routes to Building a School or District of Character Mona Noyes, Dr. Kirk Rickansrud, Tony Trongone and Nina Kemps Cherry Hill Public Schools, and Pemberton Public Schools
ROOM 339	Tips on Applying for a New Jersey, National School of Character (ALL) Eileen Dachnowicz, Senior Consultant, National Trainer and Evaluator, Character.org and NJASECD	"We did a kindness campaign, so how come the kids are still being mean?" (ALL) Christa Tinari, CEO PeacePraxis	Building Character in Troubled Times: NJ Schools of Character Who Think Outside the Box (ALL) Dr. William Trusheim, President, and Eileen Dachnowicz, Trustee. NJ Alliance for Social, Emotional, and Character Development

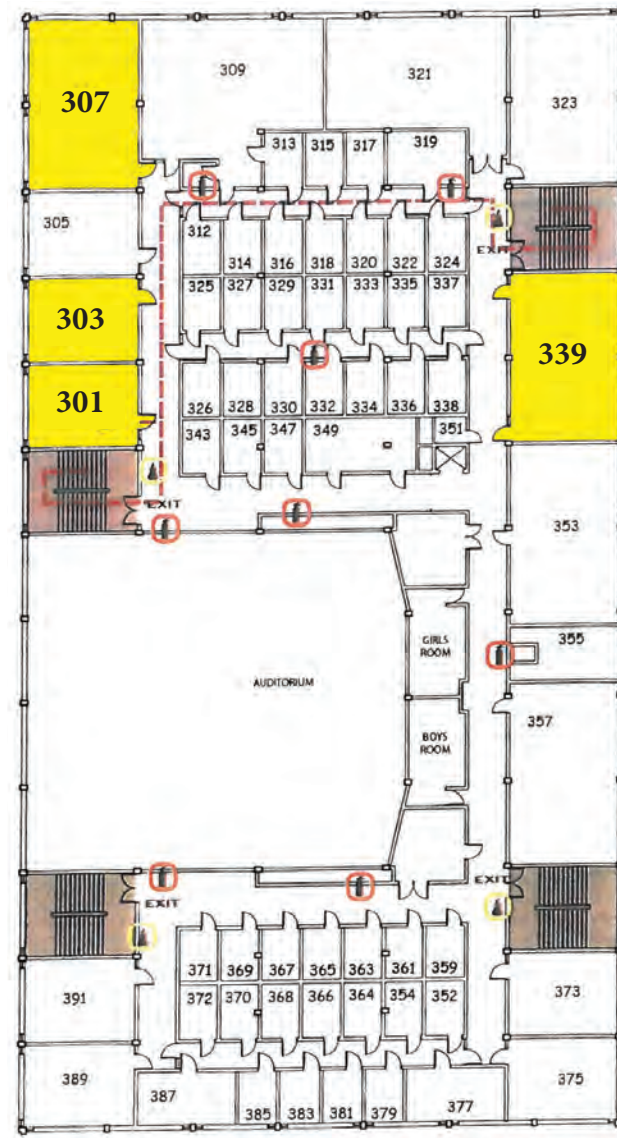
RIDER UNIVERSITY – FINE ARTS BUILDING – FLOOR PLANS



FIRST FLOOR



SECOND FLOOR



THIRD FLOOR